



**TWISTED
THROTTLE**.COM

Bolt-On Touring Accessories that fit YOUR motorcycle!

Steel Rack Adapter Kit For Shad Top Cases

-SH46 -SH33
-SH45 -SH32
-SH42 -SH29
-SH40 -SH26
-SH37

GPT.00.152.48000.B

Instruction Rev: 00

Twisted Throttle LLC
570 Nooseneck Hill Rd
Exeter, RI 02822

Phone: 401.284.4200
Fax: 401.223.6954
www.twistedthrottle.com

PLEASE READ BEFORE INSTALLING

TWISTED THROTTLE products should be installed by a qualified, experienced motorcycle technician. If you are unsure of your ability to properly install a product, please have the product installed by your local motorcycle dealer. TWISTED THROTTLE takes no responsibility for damages caused by improper installation.

Medium strength liquid thread-locker (i.e., "Loctite") should be used to secure all screws, bolts, and nuts.

All screws, bolts, and nuts should be checked after driving the first 30 miles (50 km) to ensure that all are tightened to the proper torque.

All screws, bolts, and nuts, including all replacement hardware provided by TWISTED THROTTLE should be tightened to the torque specified in the OEM maintenance manual for your motorcycle. If no torque specifications are provided in the OEM maintenance manual, the following torques may be used:

M5.....3.5 ft-lbs (5 Nm)
M6.....6.5 ft-lbs (9 Nm)
M8.....16 ft-lbs (22 Nm)
M10.....32 ft-lbs (43 Nm)
M12.....55 ft-lbs (75 Nm)

Installation Instructions

Step 1

1

Lock Catch



GPT.00.152.046
Qty.....1

2

Lock Angle



GPT.84.152.050
Qty.....1

3

Lock Nut



MU.00.06.02.6927
Qty.....4

4

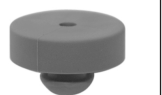
Countersunk Screw



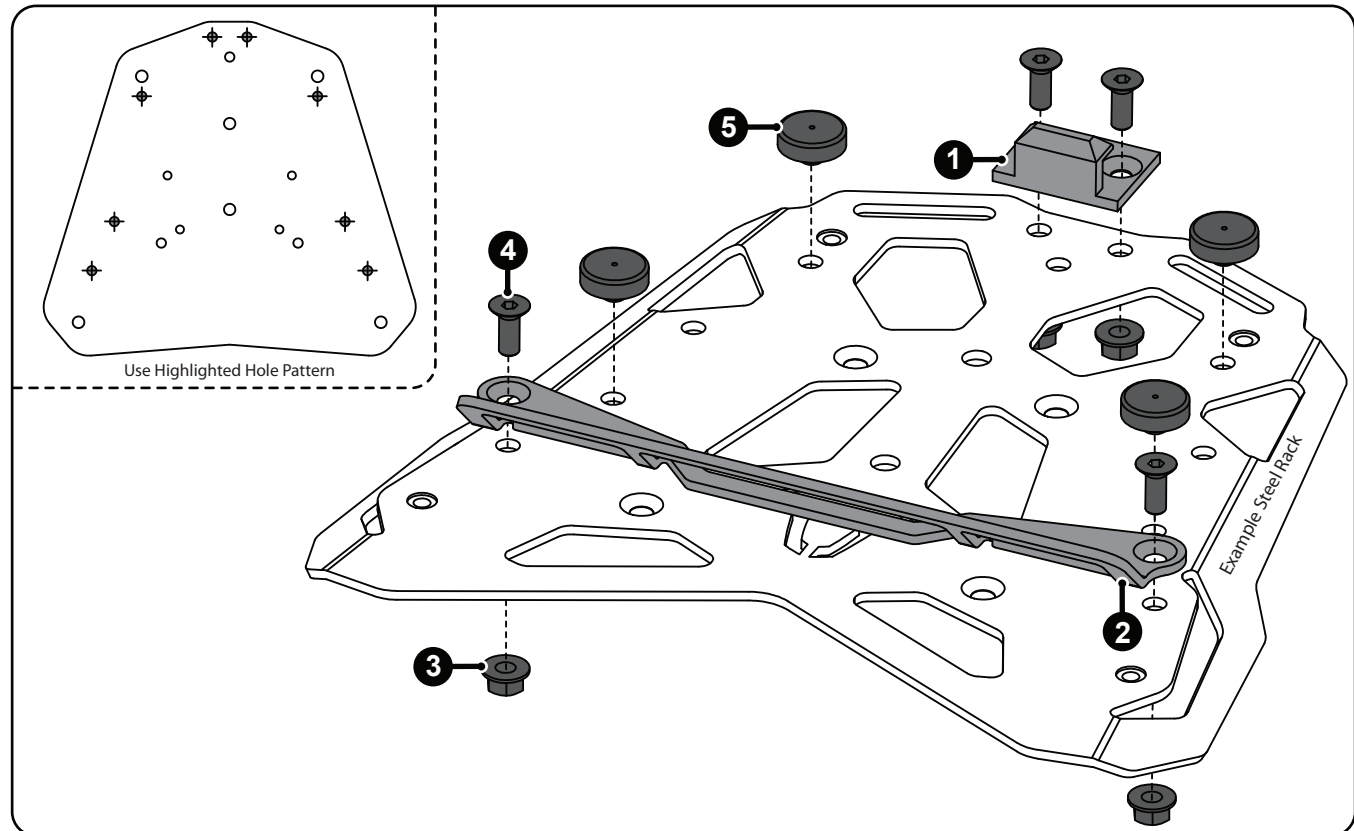
M6x16.....DIN 7991
Qty.....4

5

Rubber Bumper



MSS.00.03.016
Qty.....4



Step One: Mount the Lock Catch and Lock Angle to your Steel Rack in the position illustrated above and torque to specs. Next press the rubber bumpers into the Steel Rack in the positions illustrated above.