



# KAOKO™ CRUISE CONTROL KIT

## Code: CAN100 & CAN100S

### CAN-AM Spyder

SABS

DESIGN  
EXCELLENCE  
AWARDS  
2009

RSA Registered Designs  
No. A2007/00202  
No. A2007/00203  
No. A2007/00204

No. A2007/00205  
No. A2007/00206  
No. A2007/00207

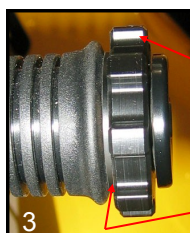
USA Patents  
"U.S. Pat. No. US D593,462 S"  
"U.S. Pat. No. US D593,463 S"  
"U.S. Pat. No. US D593,464 S"



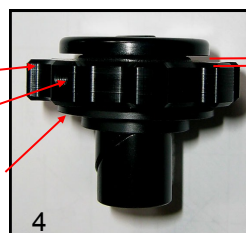
1  
Spyder End Cap Removed



2  
Plastic Thrust Washer Fitted



Friction Nut  
Grub Screw  
Thrust Washer



4  
KAOKO™ Kit

#### KAOKO Kit Comprises of :

End Weight,  
Friction Nut,  
Thrust Washer,  
2mm Allen key,  
Fitting Instructions

**DISCLAIMER: NO RESPONSIBILITY ACCEPTED FOR NON-ADHERENCE TO THESE INSTRUCTIONS**

### KAOKO™ Safety Warning:

See: [www.kaoko.com](http://www.kaoko.com); for further information [info@kaoko.com](mailto:info@kaoko.com)

The KAOKO™ Cruise Control is an aftermarket accessory. Any misunderstood, abused or incorrectly installed motorcycle accessory is a safety hazard that could cause injury or death. It's the rider's responsibility to understand the operation and purpose for which the KAOKO™ Cruise Control is designed, namely, for cruising, only when safe to do so. At all other times the control should be disengaged. The KAOKO™ Cruise Controls are to be used only by experienced and responsible riders.

**Note:** An adjustment to throttle assembly position may be necessary to suit KAOKO™ Cruise Controls. The throttle assembly position on aftermarket bars, and some OEM bars, is adjustable. The assembly can marginally be re-positioned along the handle bars slightly loosening the throttle assembly clamp screws, and then sliding the throttle assembly along the handle bars (left or right). Once done, firmly tighten the clamp screws to OEM torque specifications. This adjustment is generally not necessary.

### Fitting & Operating Instructions:

- Step 1:** Completely remove the right hand side bar end plug as shown in picture 1. Adjust the Friction Nut so that it has a 2mm gap as shown in picture 4.
- Step 2:** Place the Kaoko™ plastic thrust washer onto the end of throttle as shown in Picture 2. The spigot on the one face of the thrust washer must thrust against the end of the throttle sleeve. When fitting the thrust washer, it is necessary to stretch the rubber sleeve over the spigot of the thrust washer.
- Step 3:** Slide the KAOKO™ Kit fully into end of handle bar, up against the thrust washer, as shown in picture 3 and firmly tighten the central retaining screw.
- Step 4:** Back off the friction nut against the shoulder of the bar weight to disengage the Throttle Control.
- Step 5 :** Set Friction Nut to desired resistance by gently tightening the grub screw (see picture 4) with 2mm Allen Key. Friction nut should be stiff turning.

**Operation:** The friction nut has a **left hand thread**. In readiness for engagement it must be adjusted so that it makes light contact with the plastic thrust washer.

**To Engage:** While rolling on the throttle, the friction nut can be gripped between the small finger and palm of hand. This action tightens the nut and provides sufficient friction to set throttle to the desired opening.

*(The friction is such that the rider may still open and close the throttle. It simply has a slight stiffness to it.)*

**To Disengage:** While rolling off the throttle, grip friction nut between small finger and palm of hand.

**VERY IMPORTANT! The throttle should open and snap closed freely when correctly disengaged.**

**Note:** The Grub Screw is set to provide the necessary resistance on thread of friction nut. This may be adjusted periodically to take up wear.

**Maintenance:** Remove kit annually. Unscrew friction nut and brush clean threads with mild soap. Apply petroleum jelly to threads and assemble. Adjust grub screw per Step 5 above.

(O-Ring cushion: 19.6mm I.D. x 2.4mm section — if replacement is required)

### Indemnity:

It is advised that the use of the cruise control is at the sole risk of the rider and by his/her decision to use it he/she does indemnify the manufacturers or organizers, their agents, employees and officers against any claim or action by themselves, their dependants or any other third party arising out of any loss, damage, injury or death suffered.