

interphone ^{stereo} F4s

MOTORBIKE WIRELESS ENTERTAINMENT SYSTEM

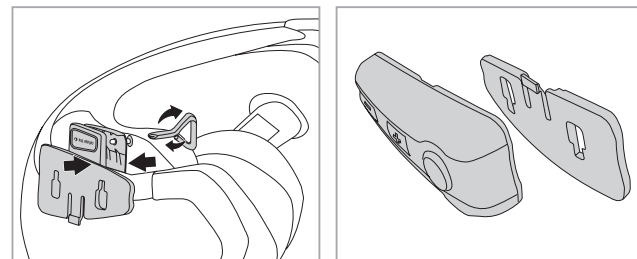
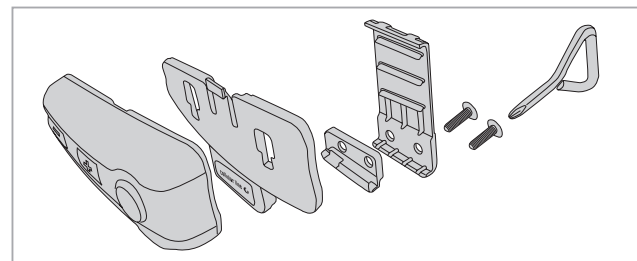
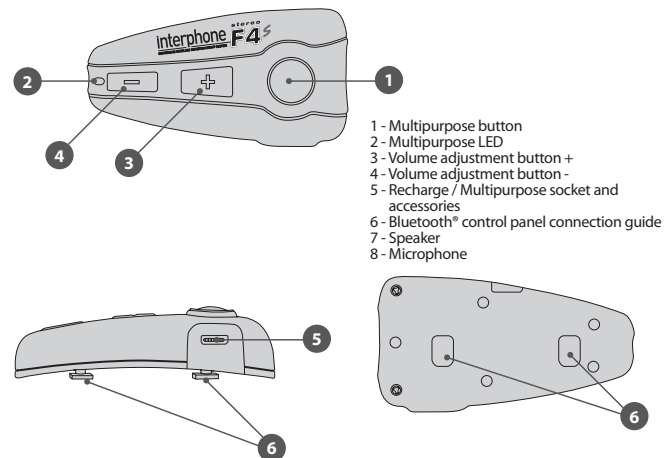


QUICK GUIDE EN



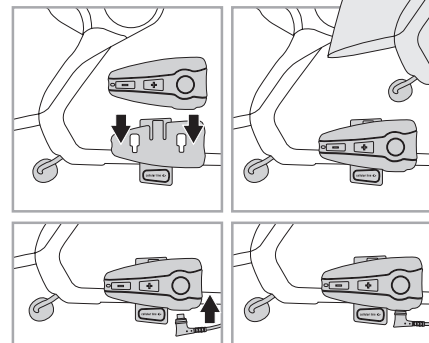
www.interphone.cellularline.com

cellular line
THE ORIGINAL



ASSEMBLY OF THE SLIDE SUPPORT WITH REMOVABLE CLIP

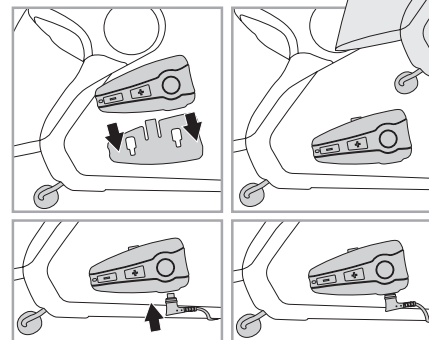
Take the support and note the best place to fasten it to the side of the helmet. Insert the rear part of the clip into the helmet and couple the other part on the outside. Insert the screws and tighten gently.



Check position and move the support if necessary, by sliding it along. Tighten the screws with the screwdriver supplied.

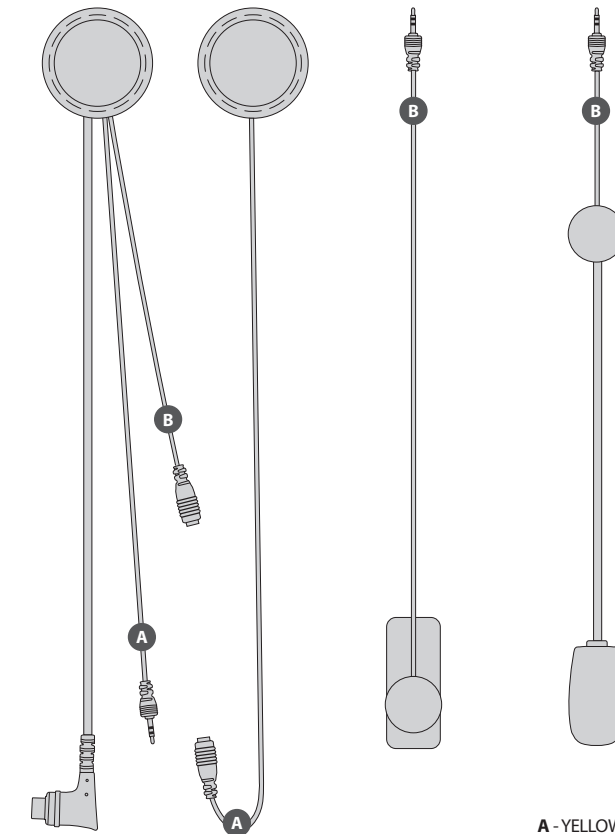
ASSEMBLY OF THE ADHESIVE SLIDE SUPPORT

Take the adhesive support and look for the best side and place to position it. Clean and de-grease the part of the helmet where you are going to stick the support (do not use any detergents that could damage the hel-



met's finish). Remove the protective film from the bi-adhesive, and apply the support to the helmet. As the support will not be able to be moved once stuck onto the helmet, take great care with its positioning, when applying.

for installation of audio kit refer to the help available
www.interphone.cellularline.com



CELLULAR ITALIA S.p.A.

www.interphone.cellularline.com - www.cellularline.com
Export Dept. international.interphone@cellularline.com

Congratulations on your purchase of the InterphoneF4S.
Before using this product, we recommend you carefully perform the operations outlined in this Quick Guide.

1 - Charging

Plug the battery charger into a 110/220 V socket.



Insert the plug on the battery charger into the connector on the InterphoneF4S.



The LED lights up red during charging.
The LED turns green when charging is complete.
When charging is complete, disconnect the unit from the charger by pulling out the plug, and also pull out the charger from the mains socket.

2 - Setup

With InterphoneF4S off, press and hold the multifunction button for approx. 8 seconds until the LED flashes blue and red alternately .



With the LED flashing red/blue, search for devices from the phone (refer to the mobile phone or navigator instruction manual).

3 - Connecting to a phone

From the Bluetooth menu on your mobile phone (such as the sample iPhone menu shown below), search for a new device.



When the device is found, select InterphoneF4S. Connection will take place automatically after a few seconds.
If a password is required, enter 0000.

4 - Telephone Function

To answer a call: as a call comes in, the speaker produces a warning sound or the telephone's ring; to answer, simply press and release the MFB button.
To end a call: to end a call, simply press and release the MFB button.
Vocal call: some telephones allow you to make a vocal call simply by pressing and releasing the MFB button.
To refuse a call: to refuse the call, press and hold the MFB button for approximately 4 seconds.
To refuse a call in **VOX** mode, follow the instructions given in the **VOX** FUNCTION section.
Volume adjustment: to adjust the volume, press the buttons **Volume +** or **Volume -**, depending on the desired volume level.

5 - Music remote control

Play/Pause: press and release the MFB button twice.
Rew: press and hold the **Volume -** button for 3 seconds.
FF: press and hold the **Volume +** button for 3 seconds.
Volume: To adjust the volume, press the buttons **Volume +** or **Volume -**, depending on the desired volume level.

6 - Telephone + stereo function (A2DP)

With this combination, the connection to the telephone function takes priority.
• During a telephone conversation, the playing of music is not permitted.
• When listening to music, you can answer a telephone call received. Press and release the MFB button to enable the call. At the end of the call, music will automatically continue playing from the exact point at which it had stopped.
• To refuse a call, press and hold the MFB button for approximately four seconds.
• To adjust the volume, press the buttons **Volume +** or **Volume -**, depending on the desired volume level.

N.B.: In telephones equipped with musical players, and therefore which include a Stereo (A2DP) profile, the Telephone + Stereo (A2DP) function coincides.

7 - Intercom - Pairing

After having turned the two InterphoneF4S off, press and hold the MFB buttons on both until the warning light alternates red and blue flashes. This will take about 8 seconds.
When both LEDs flash red/blue alternately, press and release the MFB button on one of the two InterphoneF4S.
The two InterphoneF4S are connected when both LEDs show a fixed blue light.

8 - Intercom function

To enable intercom function: to enable the conversation in an intercom profile, press the MFB button on one of the two InterphoneF4S, and hold for about 3 seconds. An audible warning will advise you when connection has occurred.
Conversation in intercom mode is full-duplex.
To disable intercom function: to disable intercom function, simply press and release the MFB button.

9 - Bluetooth® specifications®

Bluetooth®:
v2.1 EDR
Supported profiles:
Headset – Handsfree – A2DP / AVRCP / SBC

INTERPHONEF ACCESSORIES

