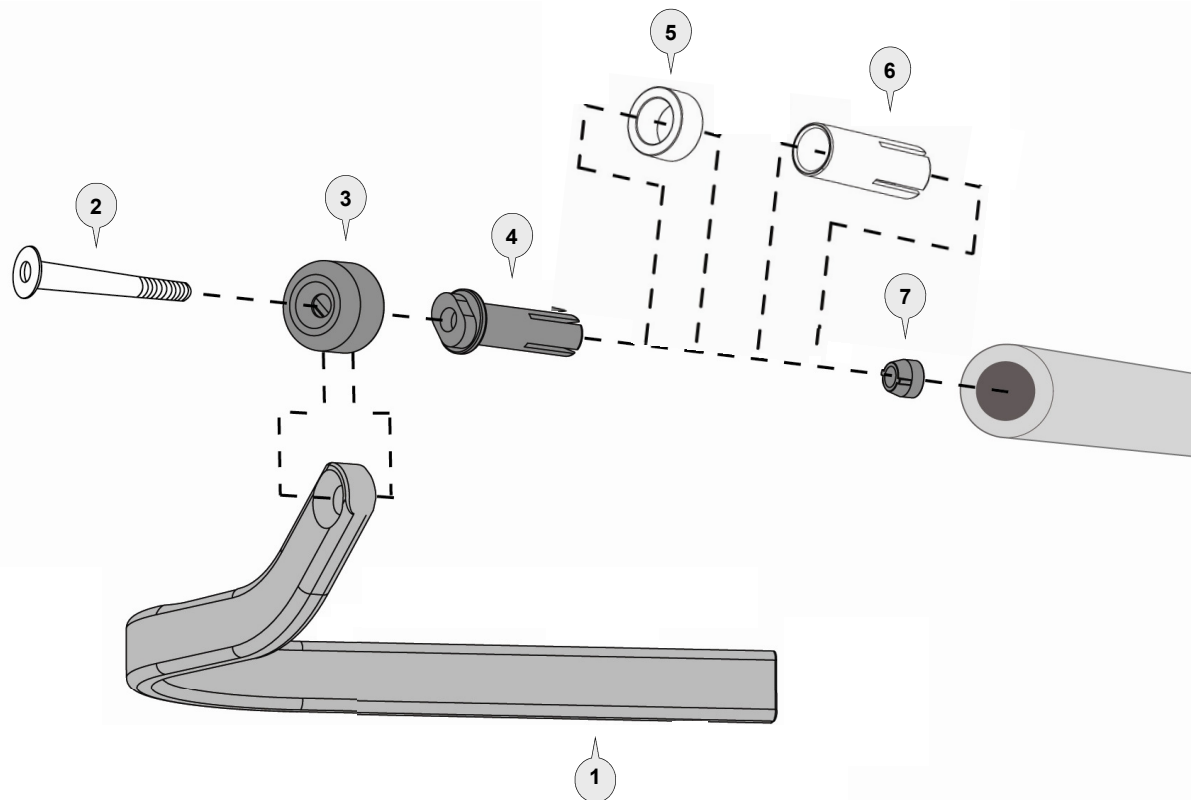


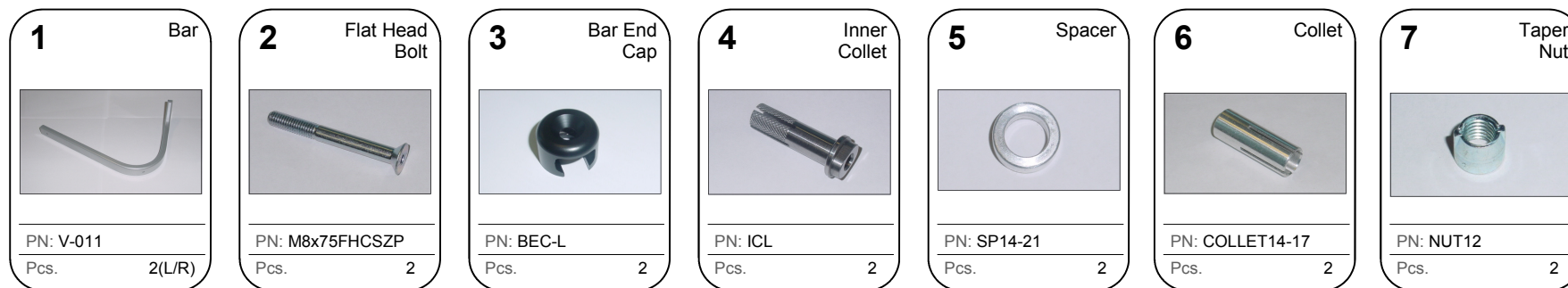
FITTING INSTRUCTIONS **Mounting Hardware to fit** **ATV**



- 5** **Optional Spacer:**
where extra lever
clearance is required
- 6** **Optional Collet:**
for use with steel
handlebars



Phone: +61 (0)2 4271 8244
Email: info@barkbusters.net



ATTENTION: Rideworx recommends that this product be installed by a qualified motorcycle technician.

IMPORTANT: All screws, bolts and nuts provided by Rideworx should be tightened to the provided torque specifications: We recommend a medium strength liquid thread lock product on bolt 2.

After the first 50km of riding check all screws, bolts and nuts are tightened to the correct torque. Additional checks should also be performed before and after each ride.

Recommended torque specifications	
M8	23 Nm (17 lbf ft)



Phone: +61 (0)2 4271 8244
 Email: info@barkbusters.net
 Web: www.barkbusters.net

WARNING: Check operation of all handlebar controls, specifically the throttle, front brake, kill switch and clutch to ensure they are operating correctly and are in accordance with the OEM specifications. In some applications the clutch and brake controls may need to be moved inward to allow sufficient lever clearance to the handguard backbone. Do not ride the motorcycle if any controls are not operating correctly or if rear view mirror vision is obscured.

Disclaimer:

Rideworx inspects all products prior to packaging and strives toward improving its products. Our guarantee is limited to the replacement of defective products. This limited guarantee is in lieu of all other guarantees or warranties implied or expressed. Buyer assumes all risk for any and all damage caused to him/herself, a third party and/or property by virtue of failure of this product. We make no warranty as to products distributed by Rideworx, expressed or implied from our suppliers or third party vendors. This includes, without limitation, any warranties or merchantability and fitness for a particular purpose. All products are offered and designed for use with standard machines. Rideworx makes no claims as to the products effectiveness on modified machines. Rideworx is the sole determiner of abuse, misuse, installation errors and modifications. We assume no liability for any errors in listings, specifications, part numbers, prices or model applications. We reserve the right to change specifications, product descriptions, product quality, pricing and application at any time without notice and without further obligation. These handguards are not designed to prevent injury in the event of an accident or crash. Ensure all controls are free of the handguards each time you ride. Failure to follow the instructions or heed this warning could lead to loss of control of your motorcycle and/or accident, injury or death. By installing and/or using a Rideworx product, you hereby accept and understand these stated terms and conditions and have followed all instructional steps.

Barkbusters