

Thank you for purchasing this Dynojet kit. This kit has been developed for a motorcycle which is set to the parameters listed at the right in the “Stage” description. If your motorcycle does not meet any of these parameters please check with Dynojet before installation. For technical assistance contact your Dynojet distributor or call Dynojet U.S.A. (800)-992-4993

2191 Mendenhall Dr. Suite 105  
North Las Vegas, NV 89081  
TEL: 702-399-1423  
FAX: 702-399-1431  
8am-5pm Pacific Time  
Monday through Friday

Website Address  
<http://www.dynojet.com>

The manufacturer and seller make no warranties express or implied which extend beyond the description of the goods contained herein. Any description or this product is for the purpose of identifying it and shall not be deemed to create an express warranty.



2120.001

U.S Models Only

2008-2011 Kawasaki KLR650

Stage 1 & 2

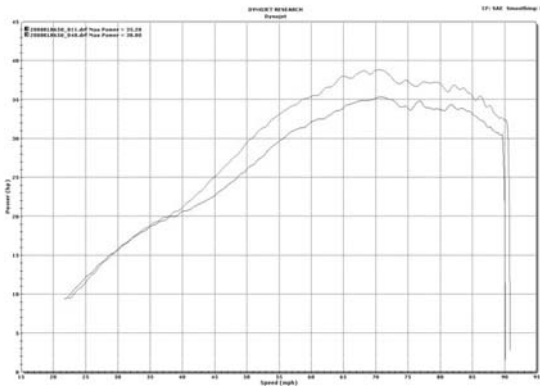
STAGE 1

For mildly tuned machines using the stock airbox, with stock or K&N filter.

STAGE 2

For mildly tuned machines using stock airbox with lid removed. K&N filter.

Both stages may be used with a good aftermarket exhaust



This graph shows a typical gain with a Dynojet jet kit.

WARNING

NO SMOKING!  
NO OPEN FLAME!  
WHILE INSTALLING  
YOUR DYNOJET KIT

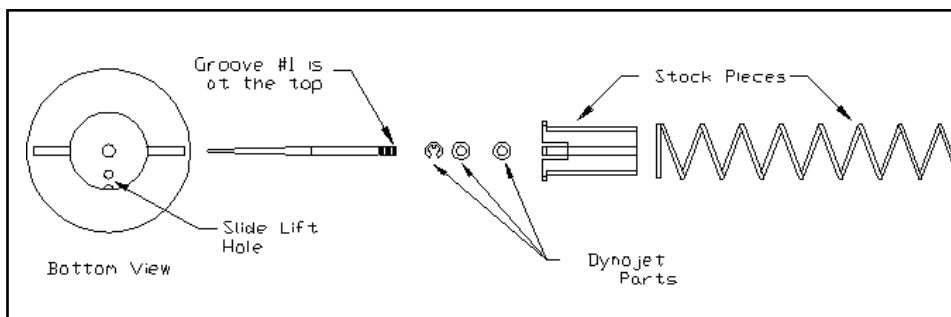
Parts List

1	Main Jet	DJ138
1	Main Jet	DJ142
1	Main Jet	DJ146
1	Main Jet	DJ150
1	Main Jet	DJ155
1	Main Jet	DJ160
1	Fuel Needle	DNO106
1	E-clip	DE0001
2	Adjusting Washers	DW0001
1	Slide Drill	DD 30
1	Plug Drill	DD 5/32
1	Screw	DS0001

## STAGE ONE INSTRUCTIONS

1. Remove the vacuum slide from the carb. Remove the stock needles and spacers, noting order of assembly (Fig. A). Using the drill bit provided (DD #30) enlarge your slide lift hole. Drill only the existing slide lift hole, **do not** drill the needle hole or any new holes.
2. Install the Dynojet needles on groove #2 from the top. Install the small Dynojet washers above the e-clip. After installing the slides in the carbs be sure to check slide movement manually.
3. Remove the stock main jets and replace with the Dynojet main jets provided. If you are running the stock exhaust install the DJ138 main jets. If you are running an aftermarket exhaust or slip-on with high flowing baffle use the DJ142 main jets. Be sure that the jet you are changing is the main jet.
4. Locate the fuel mixture plug (Fig. B). If you see a screw head at Fig.B then proceed to the adjusting procedure. With the 5/32 drill bit provided carefully drill through the plug. **NOTE: The mixture screw is directly underneath this plug, be ready to pull back on the drill the instant you break through.** Use screw provided to secure and remove this plug. Carefully turn the mixture screw clockwise until lightly seated, then back out 2.5 turns.

Fig. A



## STAGE TWO INSTRUCTIONS

**Dynojet**

2120.001

1. Remove the vacuum slides from the carbs. Remove the stock needles and spacers, noting order of assembly (Fig. A). Using the drill bit provided (DD #30) enlarge your slide lift hole. Drill only the existing slide lift hole, **do not** drill the needle hole or any new holes.
2. Install the Dynojet needles on groove #3 from the top. Install the small Dynojet washers above the e-clip. After installing the slides in the carbs be sure to check slide movement manually.
3. Remove the stock main jets and replace with the Dynojet main jets provided. If you are running the stock exhaust install the DJ150 main jets. If you are running an aftermarket exhaust or slip-on with high flowing baffle use the DJ155 main jets. Be sure that the jet you are changing is the main jet.
4. Locate the fuel mixture plug (Fig. B). If you see a screw head at Fig.B then proceed to the adjusting procedure. With the 5/32 drill bit provided carefully drill through the plug. **NOTE: The mixture screw is directly underneath this plug, be ready to pull back on the drill the instant you break through.** Use screw provided to secure and remove this plug. Carefully turn the mixture screw clockwise until lightly seated, then back out 2.5 turns.

Fig. B



Mixture Screw Plug Location

